

Multipurpose Desktop Engraving Machine

# Magic™-S7



Made in KOREA



## Multipurpose Jewelry Engraver, MAGIC™-S7

MAGIC™-S7 is a 3rd generational multipurpose engraving machine that offers revolutionary features and functions, innovative usability, high-grade structure, exceptional engraving performance, and a modern yet minimal design. It is a major jewelry engraving machine that is widely available and used in the global jewelry/accessory market. It is designed to deal with all complex aspects peculiar to jewelry engraving, and is built to engrave on objects that come in various forms, complex shapes, sizes and materials. It is especially designed for everyone for easy and quick engraving on a variety of jewelry products such as rings, pendants, and bangles.

It provides users with multipurpose functions and easy machine operations to satisfy our customers' needs. It produces precise, high quality engraving results on a variety of jewelry products with a shiny and polished finish. It is user-friendly as it comes with an easy-to-use software and a variety of support tools and device options for easy and quick engraving.

### Key Points

- Engraves on various jewelry products including the inside/outside of rings.
- Allows engraving on acrylic, various kinds of plastics, glasses, wood, modeling board, etc.
- Engraves on gold, silver, brass, and all kinds of metals including stainless steel and aluminum.
- Guarantees deep, lasting, high-quality and permanent engravings with a shiny and polished finish using a diamond scribing tool.
- Has a built-in flat clamp and rotary clamp.
- Has a built-in camera and a laser for intuitive, easy control of engraving position.
- Automatically measures the height of the material and tool length.
- Enables cost-efficient maintenance with low-cost supplies. Light, compact and easy to use and/operate.

### Engraving Purposes

- Pendant engraving
- Ring engraving (inside/outside)
- Bangle engraving (inside/outside)
- Tumbler engraving
- Mug/wine glass engraving
- Industrial parts/components engraving
- Metal engraving
- Glass engraving
- Plastic engraving
- Curved surface engraving
- Pen engraving

### Customers

- Makerspace
- Promotional gift shops
- Merch stores
- Art and craft workshops
- Signs shops
- Accessory shops
- Jewelry shops
- Souvenir shops
- Hobbyists

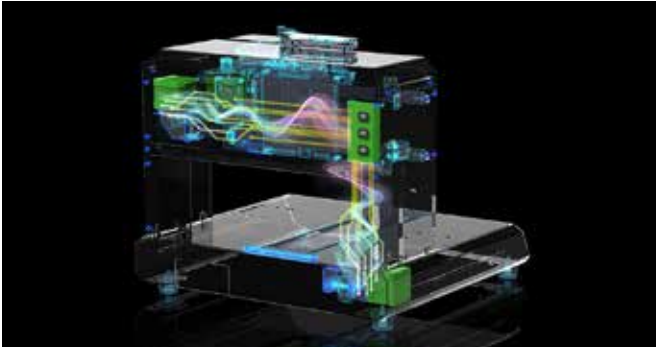
### Engraving Materials

- Titanium
- Aluminum, Anodized Aluminum
- Brass
- Precious metals such as gold, silver and platinum
- Steel
- Stainless Steel
- Plated Metal
- Plastic
- Glass
- Others



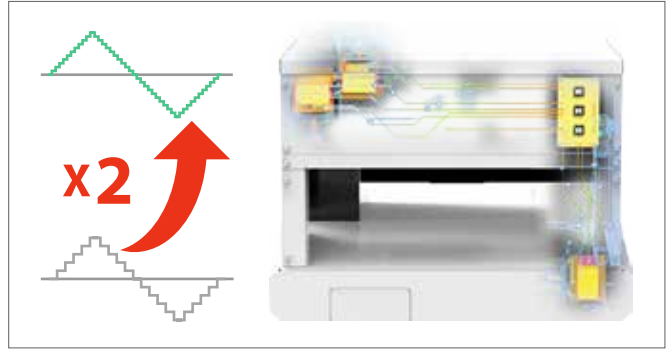
## Product Features

### ■ Third Generation Multipurpose Desktop Marking Machine



#### Innovative Functions and Features

- Offers innovative functions and features for easy operation.
- Redesigned and developed following the new and latest technology
- Provides our customers with the most efficient and most advanced engraving machine in the market that produces precise, lasting, high-quality engraving results.



#### Latest Motor Control System

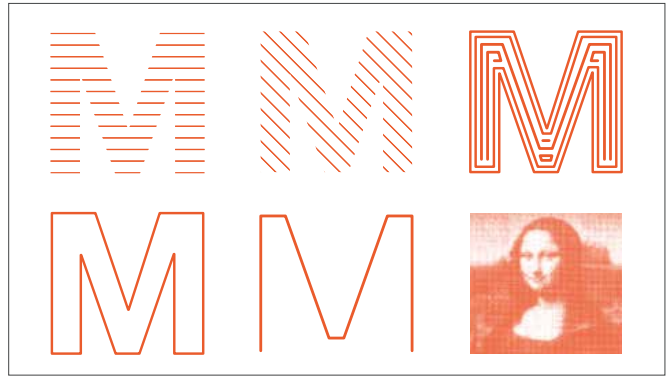
- Has a motor control system that is two times higher than that of its previous model.
- Produces high-quality, precise and accurate engraving.
- Runs quietly and smoothly to create a favorable working environment.

### ■ Jewelry-optimized marking



#### Jewelry Engraving Optimization

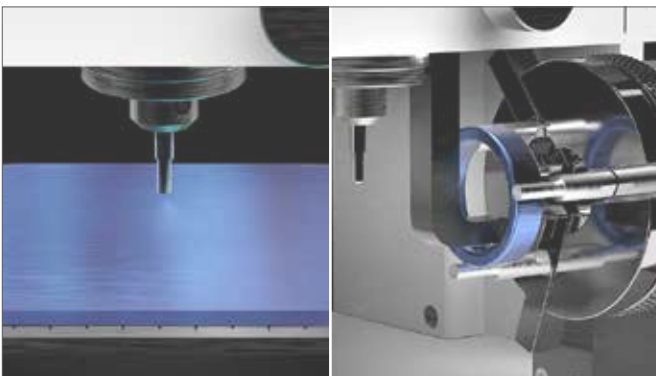
- Utilizes diamond scribing method to engrave letters, logos, patterns, photos/images, etc.
- Engraves on various metals (e.g., aluminum, metal and surgical steel, as well as precious metals like aluminum, stainless steel, etc.) and non-metals (e.g., plastic and glass) with the use of a diamond tool.
- Creates a deep, lasting, permanent mark while maintaining the material's original color.
- Leaves a shiny, smooth, polished finish similar to handcrafted products.



#### Various Engraving Effects

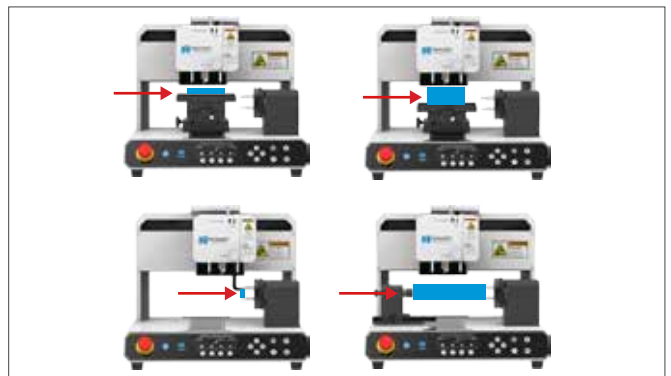
- Enables application of various effects on engravings to create a more defined, high-quality marks such as: hatching line, diagonal/cross line, contour line, outline, single line and photo marking.

### ■ Versatile Functions



#### Flat and Rotary Engraving

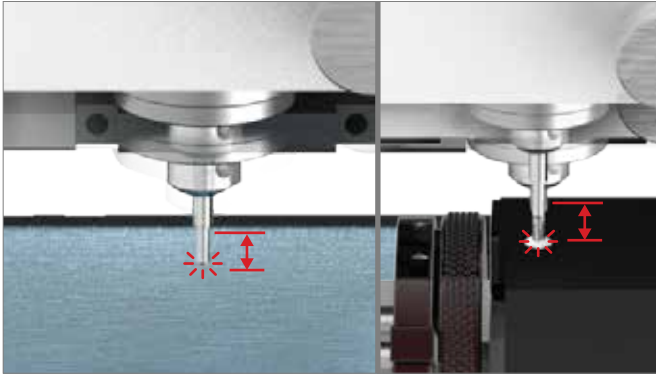
- Performs both flat and rotary engraving - an all-in-one engraving machine that can.
- Has a built-in flat clamp for engraving and marking on objects such as pendants and plates.
- Has a built-in flat rotary clamp for engraving on the inside or outside of rings, bangles and pens.



#### Easy Expansion of Functions

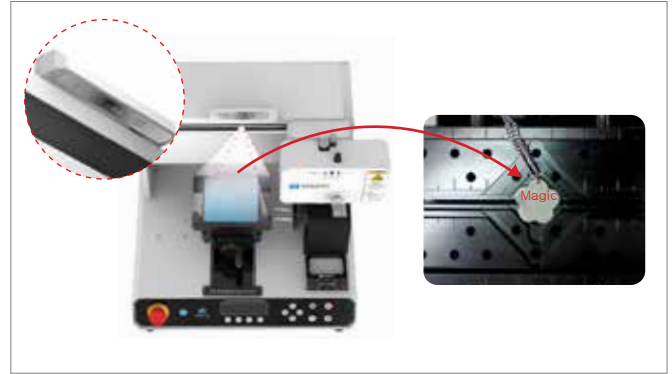
- Provides a detachable clamp to support the expansion of different engraving functions with the use of a single multifunctional pendant clamp.
- The pendant clamp can be transformed into 4 different types of clamps to facilitate engraving for different purposes-depending on the user's intention for use.

## ■ User-friendly Functions



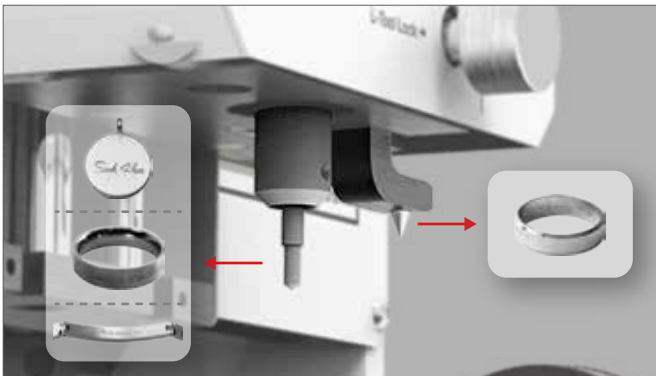
### Auto Measurement

- Has an auto measurement function that allow easy use of the machine by automatically measuring the materials and tool.
- Has auto measurement sensors that measure the length of the tool and detect the height of the material.
- Has an auto tool-setting function where it automatically sets the tool to its origin point.



### Easy Control of Engraving Position

- Has a built-in camera that enables intuitive operation through a camera to easily position and align the composition (or design) on the workpiece's surface.
- Has a laser pointer that allows users to locate and adjust the engraving position with ease.



### Built-in Tools for Flat and Rotary Engraving

- Has built-in tools for flat and rotary engraving.
- Engraves on flat surfaces of pendants, bracelets and ID tags, and on the outer surface edge of rings and bangles with the use of a diamond tool
- Engrave on the inside of rings and bangles with the use of an L-tool.



### Bluetooth Connection

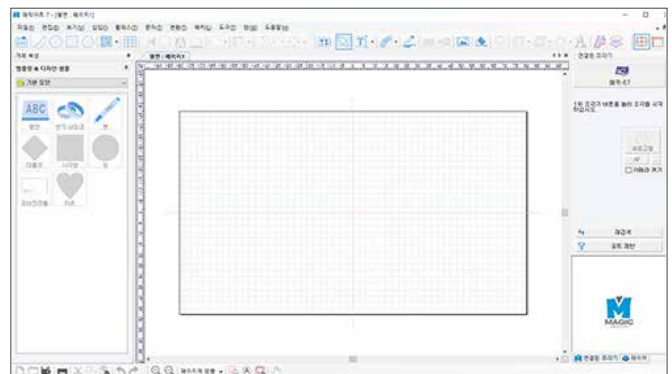
- Supports Bluetooth connection for easy operation of the machine.
- Compatible with most tablet devices such as Android tablet, iPad and Window tablet.
- Better, more efficient, fast and satisfactory engraving services can be offered by our users to their customers as their customers can directly communicate their requests and preferences to them.

## ■ Small and Modern Design and a User-friendly Software



### Small, Quiet and Modern

- S7 is built small and light for easy installation. Its modern and sophisticated design is perfect for any workshops/workspaces. It runs quietly to promote a favorable work environment.



### User-friendly Software

- S7 comes with an easy-to-use software called MagicEngrave™. It is a software specifically designed for easy machine operation. It enables easy use of the machine by anyone for wide-range purposes and make engraving, cutting and marking of materials simple and fast.



# Functions and Applications

**Pendant Engraving**



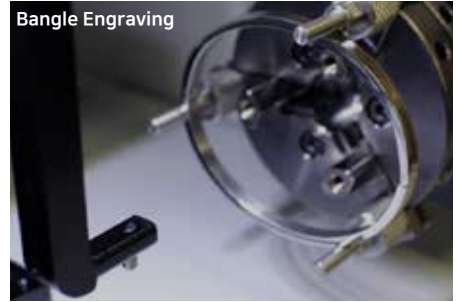
- Engraves letters, logos and patterns on various jewelry products, pet tag tags, military IDs, baby necklaces, souvenirs and promotional gifts.
- Engraves on various materials such as gold, silver, brass, aluminum, stainless steel, titanium, plastic, and glass.

**Ring Engraving**



- Engraves patterns, letters or names on the inside or outside of a ring using two separate embedded tools.

**Bangle Engraving**



- Engraves on the outside or inside of accessories with large diameters or on circular objects like bangles.
- Enables auto marking when switched to the desired mode (i.e., inner/outer surface engraving mode).

**Engraving on Curved Surfaces**



- Engraves on materials with curved surfaces such as bracelet, pen, hip flask, and ball.

**Photo Engraving**



- Engraves photographs/images using dots.

**Pen Engraving**



- Engraves on pens with different forms and lengths.
- A pen clamp is used to firmly hold pens with different sizes and forms in place during engraving process.

**Tumbler Engraving**



- Engraves on cylindrical objects such as tumblers, mugs, wine glasses, and other type of glasses.
- A tailstock is used to firmly hold various cylindrical objects in place during engraving process.

**Pet Tag Engraving**



- Engraves on a wide range of materials like aluminum, plated metal, and plastic for pet tags.

**Marking on various products**

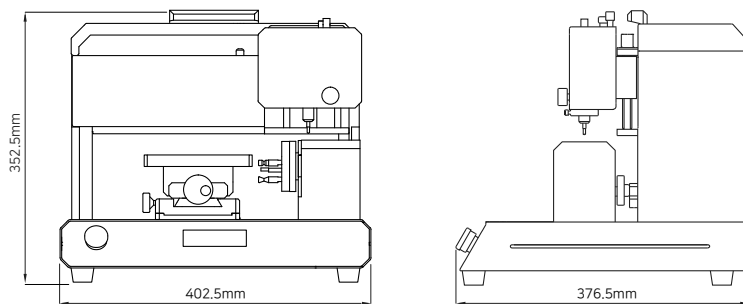


- Jigs can be used to easily fix materials in different shapes for quick marking.

## Samples



# Technical Specifications



|                       |   |                     |                        |
|-----------------------|---|---------------------|------------------------|
| Model                 | MAGIC™-S7   | Weight              | 26Kg                   |
| Size                  | 402.5mm(W) x 376.5mm(D) x 352.5mm(H)  | Voltage             | AC 100~240V, 50Hz/60Hz |
| XYZ axis stroke       | 238mm(X) x 178mm(Y) x 38.5mm(Z)   | Power consumption   | 25W                    |
| Rotary outer diameter | 17.5~80mm   | Flat engraving area | 140mm x 100mm x 38.5mm |
| Rotary inner diameter | 14~75mm   | Max material height | 60mm                   |
| Temperature           | 15~40°C   | Humidity            | 10~90%                 |
| Bluetooth             | Bluetooth BLE(Bluetooth 5.0) / Communication Range : Class 2(32.8ft) / Tx Output : MAX +4dBm / Frequency Band : 2.4 GHz |                     |                        |



## Options

### - Tailstock

A clamp that firmly holds long cylindrical objects in place like pens, tumblers, and wine glasses to prevent it from tilting to one side.



### - Bracelet Jig

A jig that firmly holds materials with curved surface in place like bracelets.



### - Watch Jig

A clamp that firmly holds a watch in place while marking on its back case.



### - Spoon Jig

A cutlery clamp that firmly holds long and asymmetrical materials in place like spoons, forks, and chopsticks.



### - Clamp Pins

A clamp pin is used to firmly hold objects/materials with different thickness and/or irregular shapes in place--that basic clamp may not hold like pendants, accessories, or pens.



### - Tablet PC

MAGIC™-S7 supports Bluetooth wireless connection based on a touch interface for easy operation of the machine without the use of any PC or cable connection. This feature can be utilized for client counseling and marking services.

