

Multipurpose Desktop Engraving Machine

Magic™-S7



Made in KOREA



Multipurpose Desktop Engraving Machine, MAGIC™-S7

Magic™-S7 is a major jewelry marking device that is available and applied widely in the global jewelry/accessory markets. The third-generation multipurpose desktop marking machine comes with revolutionary changes in its functionality, structural stability, performance, and design. The single set of machine is designed to deal with all complex aspects peculiar to jewelry marking in terms of different forms, materials, and sizes, so anyone can enjoy easy and quick marking on a variety of jewelry products such as rings, pendants, and bangles.

MAGIC™-S7 is easy and simple to use and provides a wide range of functions and powerful performance to meet different customer needs. The multipurpose engraver's modern design is aesthetically pleasing and looks nice in any place.

Key Points

- Makes it possible to mark on various jewelry products such as inner/outer diameter of rings, pendants, bracelets, bangles, etc.
- Mark gold, silver, brass, aluminum, stainless steel, aluminum various kinds of plastics, wood, etc.
- Allinone engraver for both flat and rotary engraving.
- Highquality marking on specular surfaces using a dedicated diamond tool.
- Intuitive and simple control of engraving position based on the embedded camera and laser.
- Automatically measures the height of the material .
- Costefficient maintenance with low supplies cost.
- Small sized and easy and simple for anyone to use.
- Comes with MagicEngrave™ software that supports easy and quick marking.

Marking Materials

- Special metals including surgical steel and titanium
- Common metals such as brass, aluminum, steel, and stainless steel
- Jewelry such as gold, platinum, and silver

Uses

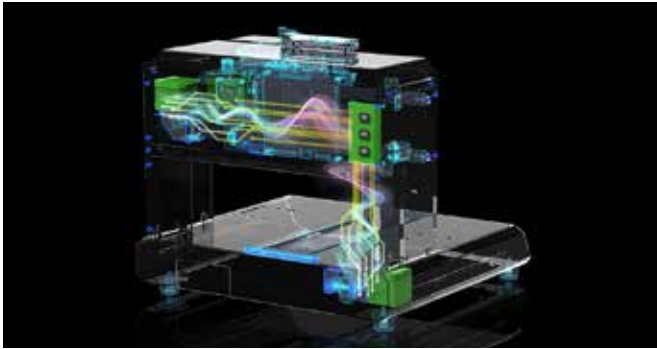
- Marking on pendants
- Pet tag marking
- Metal marking
- Marking on tumbler/mug/wine glass
- Marking on inner/outer diameter of rings
- Marking on inner/outer diameter of bangles
- Glass marking
- Pen marking
- Industrial marking
- Marking on curved surfaces such as bangles
- Other diverse metal/plastic /glass marking

Main Customers

- Jewelry workshops/shops
- Other clients who intend to engrave on various kinds of products
- Handcraft workshops
- Souvenir shops

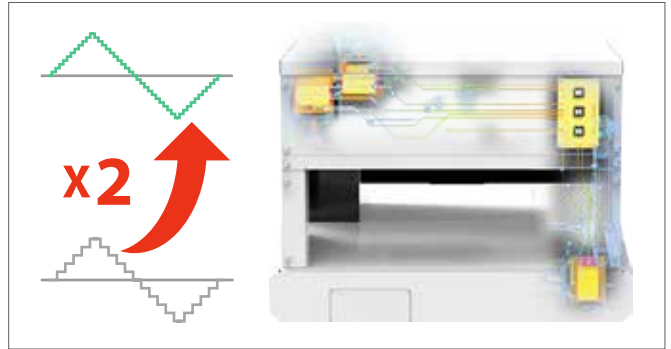


■ Third Generation Multipurpose Desktop Marking Machine



Innovative Design, Parts, and Functionality

- The third generation multipurpose desktop marking machine has achieved innovative changes.
- Everything including design, parts, and functionality was re-designed based on new technology.
- Great improvement in functionality, structural stability, performance, and design.



Third Generation Latest Motor Control System

- Machine control with a resolution that is twice that of the conventional ones.
- More detailed expression capability with higher marking quality.
- Sharp reduction of noise while machine is in operation.

■ Jewelry-optimized marking



Diamond marking is completely suitable for the characteristics of jewelry.

- Thanks to the diamond tool, the marking surface becomes specular with a luxurious gloss.
- Offers handwork-like soft and natural marking performance.
- Scribing marks are made by pressing down materials to cause little change in the weight.
- Marking is clear and easy to recognize thanks to the specular surface gloss and light reflex generated by the marking depth.
- Material colors do not change, and the original colors are maintained.

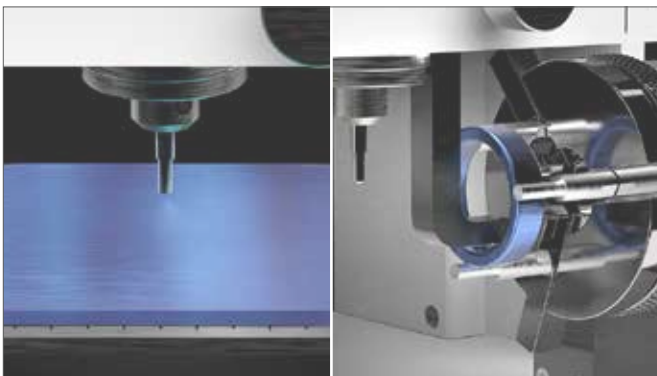


Support Various Marking Types

Scribing marks by pressing materials with a diamond tool to draw various marking effects as shown below.

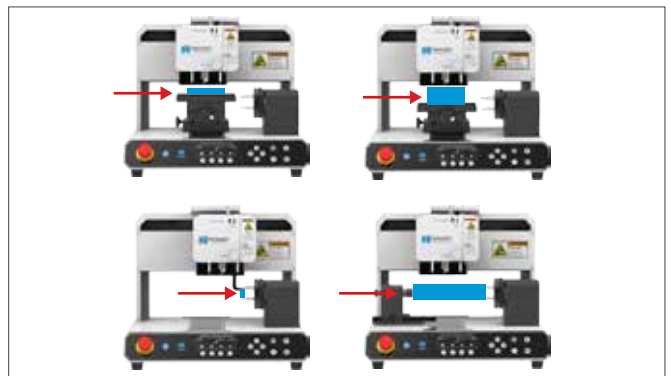
- Hatching line – Express designs clearly with vertical or horizontal lines at regular intervals.
- Diagonal/cross line – Express designs with diagonal or X-formed cross lines at regular intervals.
- Contour line – Fill the inside of designs with frame lines at regular intervals to express patterns.
- Outline – Express design edges clearly with lines.
- Single line – Express letters, etc. simply with a single line.
- Photo marking – Express photograph images with dots.

■ Versatile Application



All-in-one Engraver for both Flat and Rotary Engraving

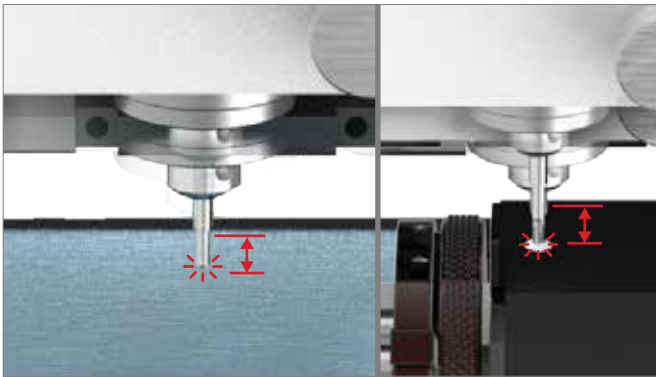
- The machine has a flat clamp to engrave and mark on surfaces such as pendants and plates.
- A rotary clamp, which engraves on rings, bangles, pens, etc., is also embedded by default.
- A single marking machine is enough to mark on products in diverse forms.



Simple Functional Expansion

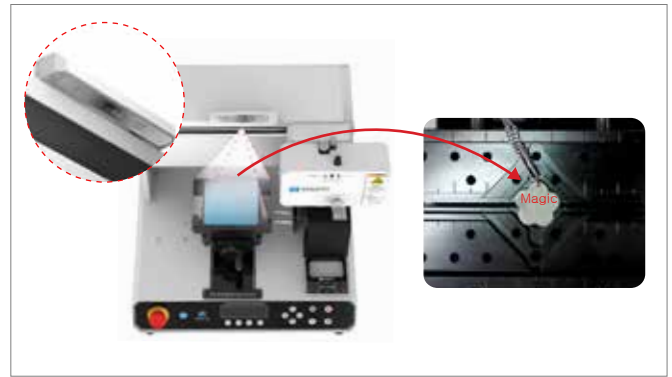
- The removable clamp makes it possible to interchange easily according to the users' purpose of use.
- The clamp can be adjusted for heights, so it is easy to engrave on materials in different thicknesses.
- Various jigs are available to easily fix and mark on materials in different forms.
- Diverse optional devices such as a tailstock are available to largely expand the methods of marking and types of material that can be processed.

Convenient Functions that Enable Easy and Quick Marking for Everyone



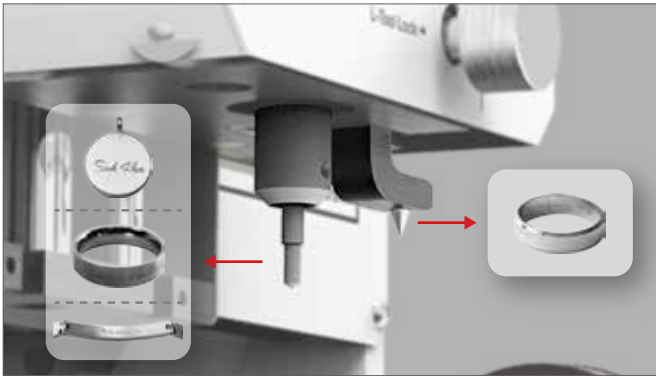
Auto Measurement

- A material measuring sensor detects the height of the material and adjusts the origin point automatically.
- The machine is designed for quick and convenient use without any extra work to adjust tools to the materials.



Simple identification of the marking position based on the embedded camera and laser

- The device supports an intuitive way of use by which users can design and mark directly upon material images using the embedded camera.
- A laser pointer is built in for users to find and adjust engraving positions easily.
- The machine requires only minimum preparation and thereby offers quick and convenient engraving for all.



Built-in Dedicated Tool for Flat and Rotary Marking

- A diamond tool is embedded to mark on pendants, ID tags, bangles, and the outer diameter of rings.
- An internal diameter-engraving tool and L-tool are embedded to engrave the inner diameters of rings/bangles.
- The device enables quick and easy engraving with no need to change tools for different materials.



Bluetooth Wireless Connection

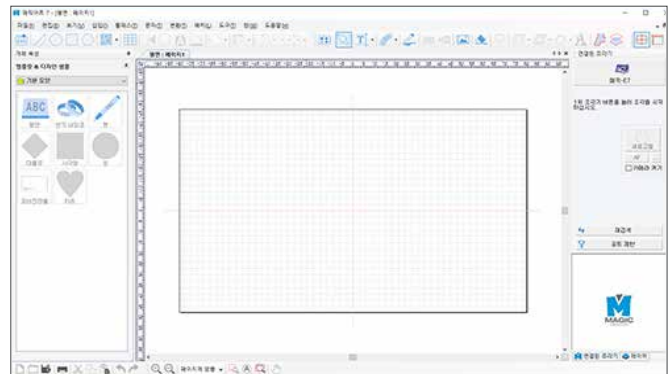
- They can control the machine wirelessly using their own tablets through Bluetooth wireless communication.
- The machine enables connection with Android tablet, iPad, Window tablet, and most of the other tablets.
- The communication function allows customers to take part in marking using a tablet at shops and start marking immediately.

Easy and User-Friendly Design and Software for Anyone



Small, Quiet, and Modern Design Style

- The machine is small-sized, and offers the advantages of low noise and less restriction on installation places.
- The simple design looks good against any type of interior settings in the surroundings.
- The unit is favorable to install at shops and provide marking services.



The machine comes with easy-to-use and convenient MagicEngrave™ software.

- MagicEngrave is a convenient and easy-to-use program that anyone can learn and use easily for marking.
- The simple way of use and various features of MagicEngrave allow anyone to utilize the engraver for wide-ranging purposes.

Functions and Applications

Marking on pendants



Mark letters, logos, patterns, etc. on various materials.

- Marking on various jewelry products, such as necklaces, bracelets, and pendants.
- Marking on jewelry products, pet tag tags, military IDs, baby necklaces, etc.
- Use a diamond tool to make inerasably deep marking with excellent quality, and minimize damage and loss to the material.

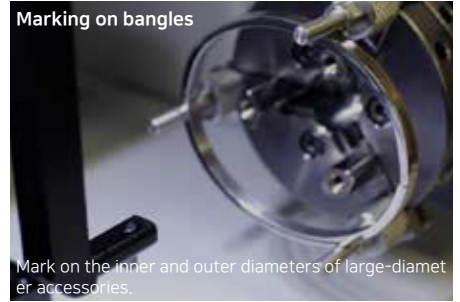
Marking on rings



Mark letters, patterns, etc. on the outer/inner diameters of a ring.

- Separate tools are embedded for outer/inner diameters to enable auto marking when switched to the desired mode.
- Mark with a diamond tool to minimize damage and loss to the material.
- Inerasably deep marking with excellent quality.

Marking on bangles



Mark on the inner and outer diameters of large-diameter accessories.

- Tools for inner and outer diameter marking are built in separately to enable auto marking once the area to mark is designated.

Marking on curved surfaces



MAGIC™-S7 allows easy marking on materials with curved surfaces.

- Mark on curved surfaces for objects such as bracelet, pen, hip flask, and ball easily.

Photo marking



Mark images on pendants, pet tags, etc.

- Use the marking method of dotting upon materials to express images.

Pen marking



Mark on diversely formed pens in different lengths.

- Easily fix pens in various shapes using a tailstock and pen clamp.

Mark on the outer diameter of a cylinder



Mark on cylindrical objects.

- Mark on cylindrical objects such as tumblers, mugs, wine glasses, and drinking glasses.
- Easily fix various cylinder-shaped objects using the tailstock and tailstock cone.

Pet tag marking



Mark on pet tags in materials such as aluminum, plated metal, and plastic.

- A wide range of engraving materials can be processed to mark on a variety of pet tags.

Marking on various products



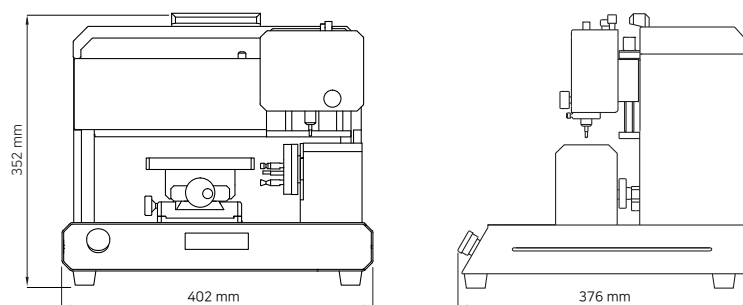
Mark directly on various products such as the back of a watch, lighter, or knife.

- Jigs can be used to easily fix materials in different shapes for quick marking.

Samples



Product specifications



Model	MAGIC™-S7	Weight	26Kg
Size	402mm(W) x 376mm(D) x 352mm(H)	Voltage	AC 100~240V, 50Hz/60Hz
XYZ axis stroke	239mm(X) x 178mm(Y) x 38.5mm(Z)	Power consumption	25W
Resolution	0.0025mm(XY) / 0.000625mm(Z) / 0.028125°(A)	Flat engraving area	140mm x 100mm
Rotary outer diameter	17.5 ~ 80mm	Max material height	60mm
Rotary inner diameter	14 ~ 78mm	Temperature/Humidity	0 ~ 40° / 10 ~ 85%
Bluetooth	Bluetooth BLE(Bluetooth 5.0) / Communication Range : Class 2(32.8ft) / Tx Output : MAX +4dBm / Frequency Band : 2.4 GHz		



Options

- Tailstock

A part that firmly fixes long cylindrical objects such as pens, tumblers, and wine glasses to prevent it from tilting to one side.



- Curved-surface bangle jig

A jig to firmly fix curved objects such as bangles.



- Watch clamp

A clamp to firmly fix a watch for marking on the back.



- Spoon clamp

The spoon clamp firmly fixes long and asymmetrical materials like spoon, fork, and chopstick.



- Clamp pin

The clamp pin can be used to fix objects such as pendant, accessory, and pen, which are thick or in complicated shapes and therefore hard to hold with the basic clamp.



- Tablet

Supports bluetooth wireless connection based on a touch interface to mark without any PC or cable connection. This feature can be utilized for client counseling regarding the marking service, etc.

